

# STRONG BONDS

Leading Technology in Adhesives & Sealants

# OVERVIEW KÖRAPOP PRODUCTS

VERSION 2016 / 01

2



Product	Shore A	Skin formation time	Elongation at break	Tensile strength	Tear resistance	Pot life / Curing speed	Notes
Körapop transparent	40	10 min	300%	3,0 N/mm <sup>2</sup>	-	3 mm / 1.day	-
Körapop Alu	40	15 min	280%	3,1 N/mm <sup>2</sup>	-	3 mm / 1.day	-
Körapop 220	60	20 min	250%	1,9 N/mm <sup>2</sup>	12 N/mm	3 mm / 1.day	-
Körapop 225	42	25 min	500%	3,0 N/mm <sup>2</sup>	20 N/mm	3 mm / 1.day	-
Körapop 225 2K	-	Pot life 20, 40, 60 min depending type B	450%	2,6 N/mm <sup>2</sup>	18 N/mm	20 – 90 minutes	Tandem cartridge available for 2 Component
Körapop 228	44	40 min	400%	2,2 N/mm <sup>2</sup>	11 N/mm	3 mm / 1.day	Self leveling
Körapop 235	50	10 min	450%	3,1 N/mm <sup>2</sup>	21 N/mm	3 mm / 1.day	-
Körapop 240	55	10 min	400%	3,2 N/mm <sup>2</sup>	21 N/mm	3 mm / 1.day	Excellent Cataplasma properties
Körapop 240 2K	48 / 46	Pot life 20, 40, 60 min depending type B	350%	2,5 N/mm <sup>2</sup>	17 N/mm	7 – 25 minutes	Not processable out of tandem cartridge
Körapop 250	56	10 min	350%	4,7 N/mm <sup>2</sup>	22 N/mm	3 mm / 1.day	Bonding of rear door entrance
Körapop 316	50	20 min	140%	2,3 N/mm <sup>2</sup>	10 N/mm	3 mm / 1.day	Sprayable seam sealer
Körapop 330	58	10 min	200%	2,3 N/mm <sup>2</sup>	-	3 mm / 1.day	High position tack

# OVERVIEW KÖRAPUR PRODUCTS

VERSION 2016 / 01



3

Product	Shore A	Skin formation time	Elongation at break	Tensile strength	Tear resistance	Pot life / Curing speed	Notes
Körapur 030	45	45 min	800%	2,9 N/mm <sup>2</sup>	12 N/mm	3 mm / 1.day	non-hazardous product CE-Certificate EN 15651 Teil 1
Körapur 116	50	40 min	650%	2,5 N/mm <sup>2</sup>	11 N/mm	3 mm / 1.day	Building class. B2
Körapur 120	45	20 min	500%	2,0 N/mm <sup>2</sup>	9 N/mm	3 mm / 1.day	-
Körapur 125	48	45 min	450%	2,0 N/mm <sup>2</sup>	9 N/mm	3 mm / 1.day	-
Körapur 128 S	40	30 min	500%	1,5 N/mm <sup>2</sup>	5 N/mm	3 mm / 1.day	Self leveling
Körapur 135	50	45 min	650%	3,0 N/mm <sup>2</sup>	11 N/mm	3 mm / 1.day	-
Körapur 135 RLT	50	45 min	650%	3,0 N/mm <sup>2</sup>	11 N/mm	3 mm / 1.day	VDI 6022 sheet 1
Körapur 140	55	45 min	400%	4,0 N/mm <sup>2</sup>	7 N/mm	3 mm / 1.day	-
Körapur 140 2K	55	-	400%	4,0 N/mm <sup>2</sup>	7 N/mm	20 min	-
Körapur 140 LHB	55	70 – 90 min	400%	4,0 N/mm <sup>2</sup>	7 N/mm	3 mm / 1.day	-

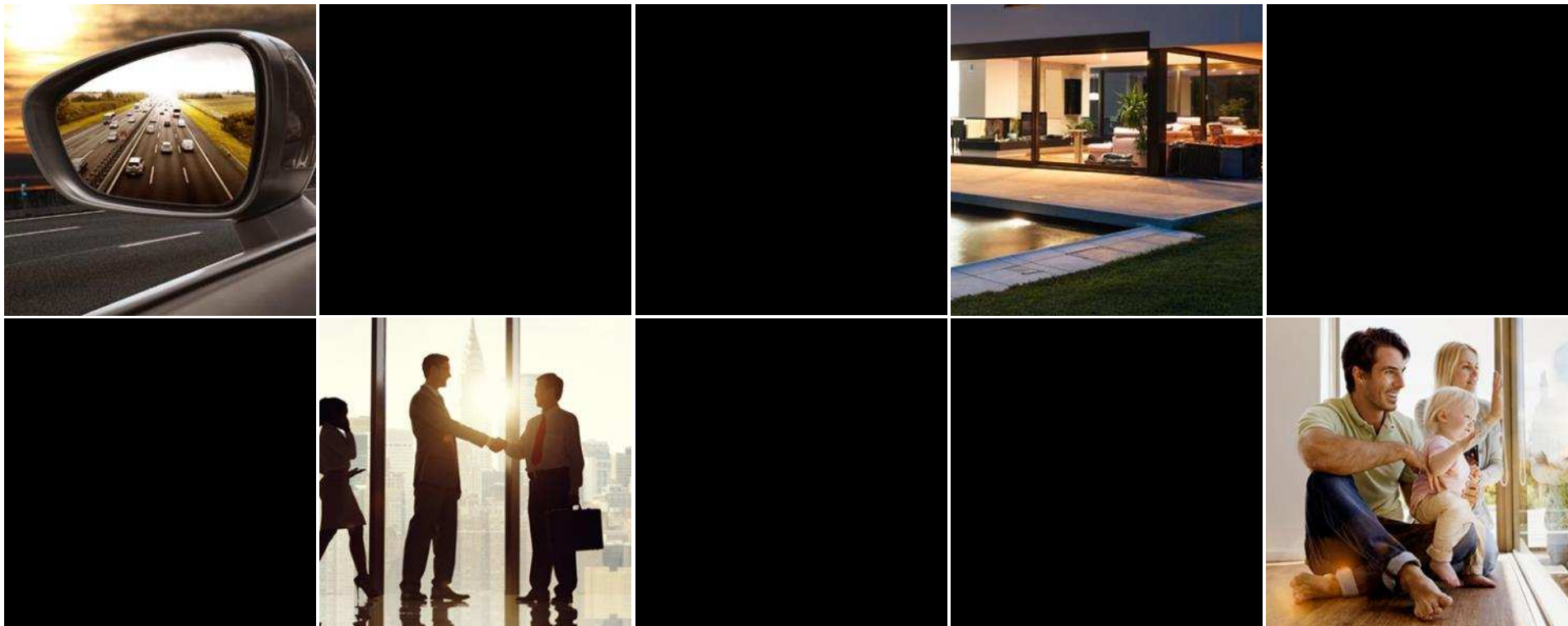
# OVERVIEW 2C. KÖRAPUR PRODUCTS

VERSION 2016 / 01



4

Product	Mixing ratio	Pot life	Elongation at break	Tear resistance	Mixing viscosity	Shore D	Notes
Körapur 643	3:1 by weight Köracur TH 650	60 min	-	-	2.500 mPas	-	Low viscous, suitable for grouting
Körapur 648	3,5:1 by weight Köracur TH 240	120 min	-	13 N/mm <sup>2</sup>	1.400 mPas	-	Long open time, very low viscous
Körapur 666	6:1 by weight Köracur TH 650	5/8/15/18/20/30/45/60/90 min	-	-	50.000 mPas	73	Easy to dispense, good slump properties in vertical position
Körapur 672	Köracur TH 650	20/45/55/ 60/80 min	-	18,5 N/mm <sup>2</sup>	8.000 mPas	60	Non-sensitive to wood moisture <16%
Körapur 672 NV	5:1 by weight Köracur TH 650	40 min	50%	7 N/mm <sup>2</sup>	5.000 mPas	52	Low viscous, easy to dispense
Körapur 784	1:1 by volume Köracur TH 715	1 / 5 min	-	-	30.000 mPas	65	Multi purpose applications
Körapur 790	1:1 by volume Köracur TH 715	6 / 30 min	-	18 N/mm <sup>2</sup>	30.000 mPas	65	Multi purpose applications
Körapur 840	TH 650 / TH 724 5:1 by weight	2/15/20/45 min	40%	14 N/mm <sup>2</sup>	45.000 mPas	73	Impact resistance
Körapur 842	5:1 by weight Köracur TH 650	20 / 45 / 80 min	70%	10 N/mm <sup>2</sup>	55.000 mPas	45	Impact resistance, flexible in cool conditions



## STRONG BONDS

KÖMMERLING CHEMISCHE FABRIK GMBH  
Zweibrücker Str. 200  
66954 Pirmasens

Phone: +49 6331 562000

E-Mail: [info@koe-chemie.de](mailto:info@koe-chemie.de)

Internet: [www.koe-chemie.de](http://www.koe-chemie.de)

A group member of  **ROYAL**  
ADHESIVES & SEALANTS

 **KÖMMERLING**  
KÖMMERLING CHEMISCHE FABRIK GMBH